



## Suspicious vehicle can be searched by feature and narrowed down quickly

Enables law enforcement to find the candidate of suspicious vehicle efficiently even by the incomplete information from witness such as lack of license plate, then helps to accelerate time of investigation.

### Key Features

#### Searching vehicle from appearance information

- Search by date / time, location, vehicle type, vehicle color, direction, which is often provided by witness of crime or incident.

Time & Date

From: 4/1/2019 8:30 AM

To: 4/1/2019 9:00 AM

Location

Bay Street & South Street

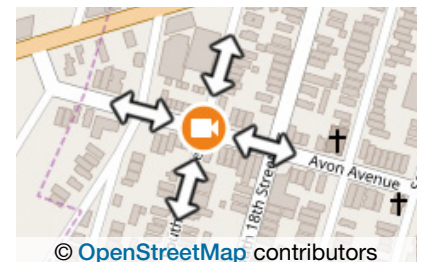
Vehicle Appearance

Type

Sedan, Van, SUV, Truck, Bus, Pickup Truck

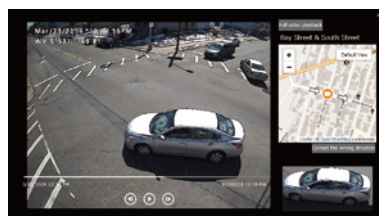
Color

White, Gray/Silver, Black, Red, Brown, Yellow, Green, Blue, Purple, Pink



#### Narrow down from search result list

- 1 click on a thumbnail and play high resolution image from VMS to confirm.
- The direction of the car is displayed on the map with the playback image and the thumbnail image.

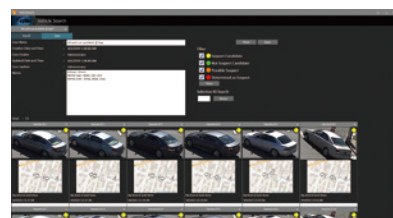


- Select and mark on any candidate. All selected items are easily checked in case management window.

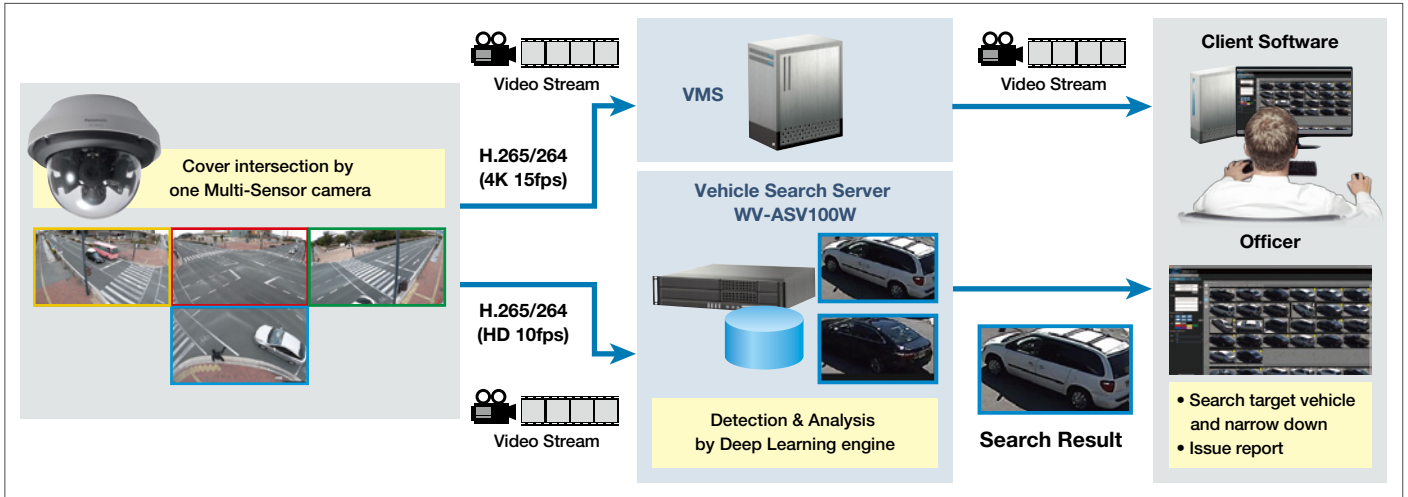


#### Make out a report including direction information

- In the case window, manage suspicious candidates and create the report for on-site officer to confirm with witness easily & quickly, such as, by email.



## Example of a Basic Connection System



## Specifications

### Basic Specifications

<b>Vehicle detection</b>	Search key	Type	6 (Pickup Truck, Sedan, Van, SUV, Truck, Bus)
		Color	10 (Green, Blue, Brown, Purple, Yellow, Red, Pink, Black, Silver/Gray, White)
		Ambiguous retrieval	Adjust type and Color range
		Direction	8 inbound/ 8 outbound direction (enable to filter)
		Time & Date	month, day, hour, minute
<b>Visualization</b>	Result view	Thumbnail (max. 64 at same page)	
	Map integration	Search and Result with direction on the map *Google Maps and OpenStreetMap are supported.	
	Report output	Print to paper and PDF (depend on Windows environment), enable to share by email	
	Log	Save and Export Operation log (CSV file)	
<b>system</b>	Max ch per server	20ch (When using 2 ch per unit with 10 multi-sensor camera, 10 intersections)	
	Max ch per system	200ch (When using 2 ch per unit with 100 multi-sensor camera, 100 intersections)	
	Max server per system	10 server	
	Max client per system	10 client	
	Retention period	31 days as default (14 to 92 days, configurable)	
<b>Integration</b>	Camera	i-PRO Extreme Camera *Multi-sensor/Fixed/PTZ(Except 360-degree fisheye camera)	
	Input stream	HD 720p at 10fps(fixed), H.265/H.264	

## System requirements

### Vehicle Search Server

CPU	Intel® Xeon® Gold 5118 2.3 GHz (12-core 24-thread) or better, Core™ i7-8700K 3.70 GHz (6-core 12-thread) or better
Memory	32 GB (16 GB x 2) or more
HDD	3 TB or more (in the case of 31days)
Graphic	NVIDIA Quadro P4000 x 2
OS	Microsoft® Windows® 10 Pro (64 bit) Release Ver.1809 and later, Microsoft® Windows Server® 2016 Standard Edition
Network I/F	1000 Mbps
Power Supply	550 W or more

### Supported Video Management Software

Genetec	Genetec Security Center V5.7 SR4, V5.8 GA + WV-ASVC101W
Video Insight	Video Insight IP Server / VI MonitorPlus V7.3.2.5, V7.4.2.32, V7.5.1.16 + WV-ASVC101W

## Products Lineup

Product Name	Model No.	
Vehicle Search Server Software	WV-ASV100W	
Client Plug-in Software (Genetec / Video Insight)	WV-ASVC101W	
Additional Camera Kit	4ch	WV-ASVE104W
	1ch	WV-ASVE101W
Update Software (per 1 year, per server)	WV-ASVM111W	
*Essential for purchase of the first year		

### Trademarks and registered trademarks

- Microsoft, Windows, Windows Vista, Windows Media, Internet Explorer, and ActiveX are either registered trademarks or trademarks of Microsoft Corporation in the United States and/or other countries.
- Microsoft product screen shot(s) reprinted with permission from Microsoft Corporation.
- "Intel", "Xeon", "Core" are registered trademarks of Intel Corporation.
- NVIDIA, QUADRO are registered trademarks of NVIDIA Corporation in the U.S. and/or other countries.
- All other trademarks identified herein are the property of their respective owners.

### Important

- Safety Precaution: Carefully read the operating instructions and installation manual before using this product.
- Panasonic cannot be responsible for the performance of the network and/or other manufacturers' products used on the network.
- Copyright OpenStreetMap and contributors, under an open license: <http://openstreetmap.org/copyright>
- Panasonic i-PRO Sensing Solutions Co., Ltd. cannot be responsible for the performance of the network and/or other manufacturers' products used on the network. • Specifications are subject to change without notice.

DISTRIBUTED BY :

# Panasonic

<https://security.panasonic.com>

<https://www.facebook.com/Panasonicnetworkcamera/>

(2A-223DA)